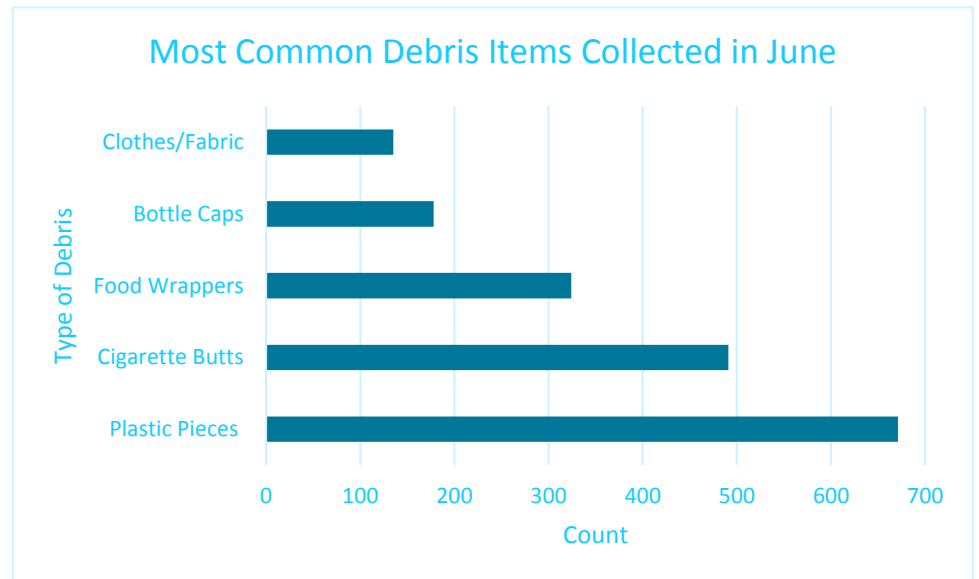




June Summary

Thank you, volunteers, for another great month of our Adopt a Beach program! Here are some quick highlights to give you an inside look at the work you are helping Pacific Whale Foundation complete.



Are you noticing these similar overall trends at your adopted beach?

How can you be more mindful about your own waste?

How can we educate the public about our tobacco-free beaches law?



Gomes 'ohana at Ka'Ehu



Cabatingan 'ohana at Papalaua

Trends of the Month

- 3,309 pieces of debris removed and recorded!
- Lots of sand toys and shoes.
- More Band-Aids, PPE, and goggles.

Highest debris load:
Ho'aloa Beach Park

Highest item count:
Plastic pieces – 671!

Wildlife spotted:
Green sea turtles are now in *nesting season*. Watch for turtle tracks and nests!

If you come across a sick or injured sea turtle, please contact MOC Marine Institute at 808-286-2549



Debris Tip

Did you observe any heavy fishing gear that needs removal? The State has just launched a hotline for the removal of abandoned, lost, or discarded fishing nets. If you locate one, call 833-4-Da-Nets (833-432-6387) for removal!

Policy Update

This week, Maui County Council adopted a resolution (drafted in collaboration with PWF!) to urge Hawai'i's Congressional Delegation to become co-sponsors of the monumental Break Free From Plastic Pollution Act! This resolution will be transmitted to Mayor Victorino, Governor Ige, all other Hawai'i State Counties, and our State's members of congress in hopes of catapulting Hawai'i as a leader in environmental legislative action.



Contact Us

Pacific Whale Foundation
300 Ma'alaea Rd. Suite 211
Wailuku, HI 96753
808-856-8344
conservation@pacificwhale.org
pacificwhale.org/conservation

Thinking Further

Q. How can you have a sustainable holiday weekend?

A. Being aware of our waste while celebrating at the beach is crucial for a healthy-for-the-ocean festivity! Think about using reusable containers, having guests bring their own cups or plates, even cutlery! Having a plan for your waste will also help to keep trash cans from overflowing on heavily trafficked routes and areas.

Share with us!

Connect with your fellow adopters by using the hashtag #adoptabeachpwf and/or by tagging us on Instagram [@pacificwhalefoundation](https://www.instagram.com/pacificwhalefoundation)

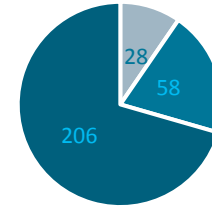
Picked up something unexpected this month? Send us your most unusual find and you could be spotlighted on Pacific Whale Foundation's social media!

Send the following info to our Digital Marketing Specialist, Lindsey, at lindseygomez@pacificwhale.org with the subject line "**Adopt a Beach: Unusual Debris**" and include the following information in the body of the email:

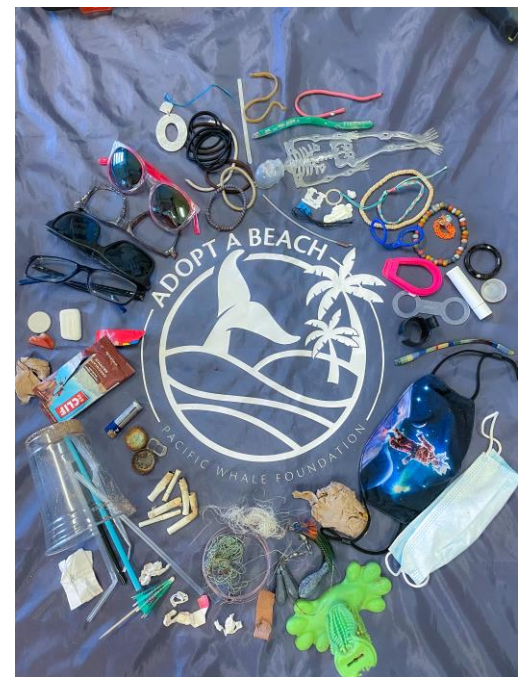
- A photo of the unusual marine debris and/or a shot of you with your debris haul
- A description of the unusual debris (where you found it, why it's unique, etc.)
- Any other info that you'd like to share!

We can't wait to see what you've picked up!

Food Wrapper Count for June



■ East ■ West ■ South



@underthecmaui's haul from Kahekili Beach